

第50回全国都道府県対抗ボウリング選手権大会



Oil Pattern Distance: 39 Feet **Reverse Brush Drop:** 39 Feet **Oil Per Board:** 50 uL
Forward Oil Total: 17.1 mL **Reverse Oil Total:** 17.75 mL **Volume Oil Total:** 34.85 mL
Forward Boards Crossed: 342 Boards **Reverse Boards Crossed:** 355 Boards **Total Boards Crossed:** 697 Boards

	Start	Stop	Loads	Speed	Crossed	Start	End	Feet	T.Oil
1	2L	2R	5	26	185	0.0	14.7	14.7	9250
2	4L	4R	3	26	99	14.7	25.7	11.0	4950
3	6L	6R	2	26	58	25.7	33.0	7.3	2900
4	2L	2R	0	26	0	33.0	39.0	6.0	0

Navigation: Forward Reverse More

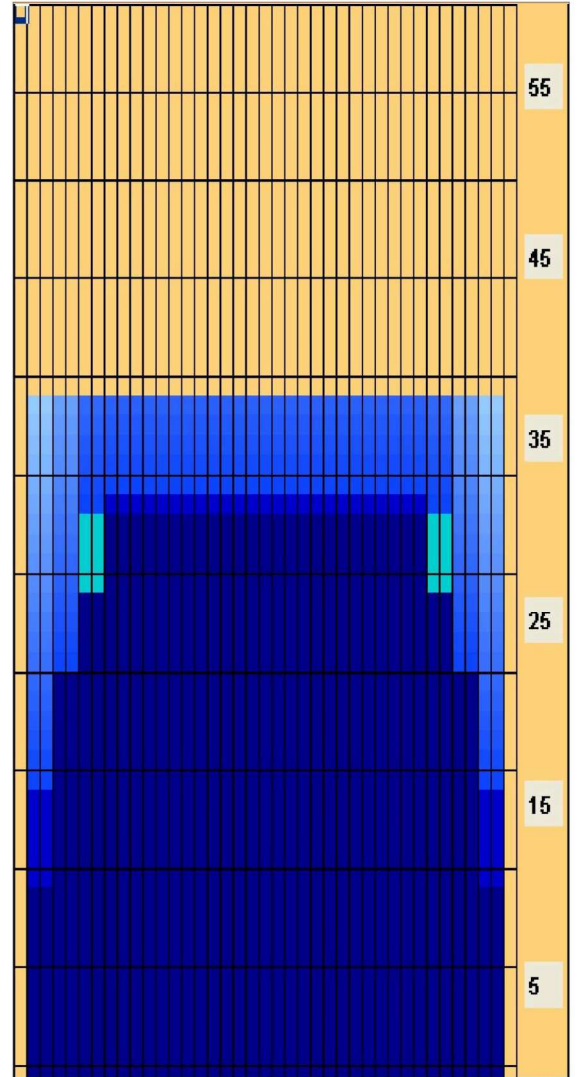
	Start	Stop	Loads	Speed	Crossed	Start	End	Feet	T.Oil
1	2L	2R	0	18	0	39.0	34.0	-5.0	0
2	8L	8R	2	18	50	34.0	28.9	-5.1	2500
3	6L	6R	2	14	58	28.9	25.0	-3.9	2900
4	4L	4R	3	14	99	25.0	19.1	-5.9	4950
5	2L	2R	4	14	148	19.1	11.2	-7.9	7400
6	2L	2R	0	10	0	11.2	0.0	-11.2	0

Navigation: Forward Reverse More

Conditioner:
 Type In or Select
 One

 TransferType:
 Type In or Select
 One

- Forward
- Reverse
- Combined
- Buff



Item	3L-7L:18L-18R	8L-12L:18L-18R	13L-17L:18L-18R	18L-18R:17R-13R	18L-18R:12R-8R	18L-18R:7R-3R
Description	Outside Track:Middle	Middle Track:Middle	Inside Track:Middle	Middle: Inside Track	Middle:Middle Track	Middle:Outside Track
Track Zone Ratio	1.36	1	1	1	1	1.36

