

第13回 関東地区ダブルスボウリング競技大会



Oil Pattern Distance:	42 Feet	Reverse Brush Drop:	25 Feet	Oil Per Board:	60 uL
Forward Oil Total:	18 mL	Reverse Oil Total:	6.84 mL	Volume Oil Total:	24.84 mL
Forward Boards Crossed:	300 Boards	Reverse Boards Crossed:	114 Boards	Total Boards Crossed:	414 Boards

	Start	Stop	Loads	Speed	Crossed	Start	End	Feet	T.Oil
1	2L	2R	1	14	37	0.0	0.0	0.0	2220
2	4L	4R	1	18	33	0.0	2.5	2.5	1980
3	6L	6R	1	18	29	2.5	5.0	2.5	1740
4	8L	8R	1	18	25	5.0	7.5	2.5	1500
5	10L	10R	2	22	42	7.5	13.7	6.2	2520
6	11L	11R	2	22	38	13.7	19.9	6.2	2280
7	12L	12R	3	22	51	19.9	29.2	9.3	3060
8	13L	13R	3	22	45	29.2	38.5	9.3	2700
9	2L	2R	0	14	0	38.5	42.0	3.5	0

Conditioner:
Type In or Select
One

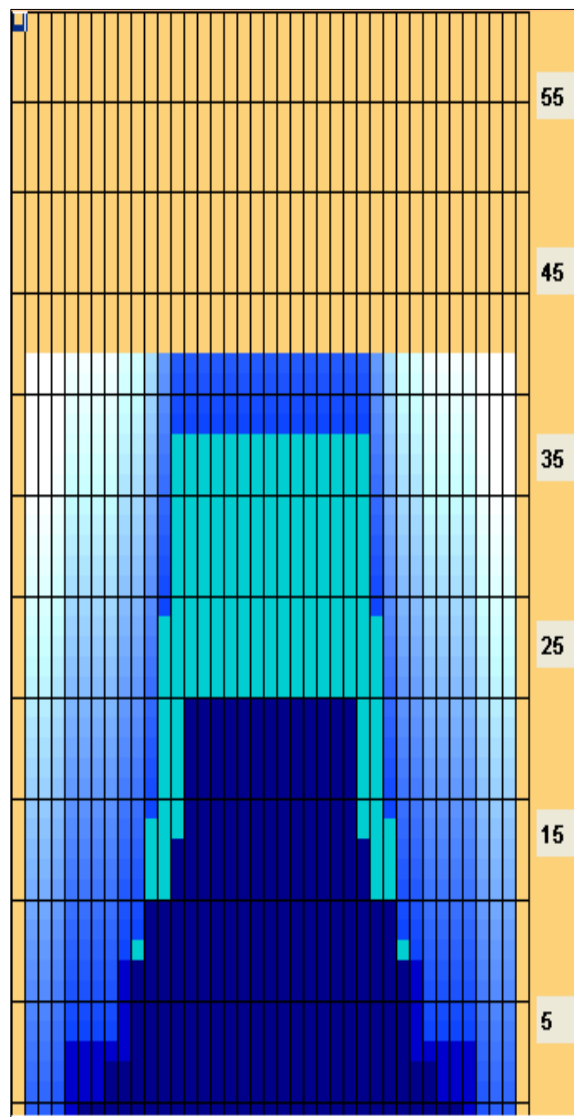
TransferType:
Type In or Select
One

Forward

Reverse

Combined

Buff



Forward Reverse More

	Start	Stop	Loads	Speed	Crossed	Start	End	Feet	T.Oil
1	2L	2R	0	30	0	42.0	25.0	-17.0	0
2	14L	14R	2	26	26	25.0	17.7	-7.3	1560
3	13L	13R	1	22	15	17.7	14.6	-3.1	900
4	11L	11R	1	22	19	14.6	11.5	-3.1	1140
5	9L	9R	1	22	23	11.5	8.4	-3.1	1380
6	5L	5R	1	14	31	8.4	6.5	-1.9	1860
7	2L	2R	0	14	0	6.5	0.0	-6.5	0

Forward Reverse More

Item	3L-7L:18L-18R	8L-12L:18L-18R	13L-17L:18L-18R	18L-18R:17R-13R	18L-18R:12R-8R	18L-18R:7R-3R
Description	Outside Track:Middle	Middle Track:Middle	Inside Track:Middle	Middle: Inside Track	Middle:Middle Track	Middle:Outside Track
Track Zone Ratio	7.14	2.27	1.02	1.02	2.27	7.14

